

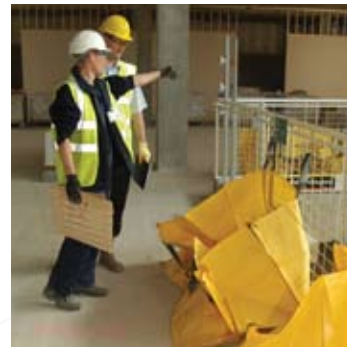
Case Study: Construction

HIPPOWASTE™ was awarded the waste management contract by Wates Retail for the construction of Europe's largest John Lewis department store in Liverpool.

The new 240,000 square foot, multi-million pound John Lewis store, is part of The Paradise Project – a regeneration project covering 42 acres in the heart of the city.

At over five storeys high, this complex construction development required a flexible, easily transportable waste removal solution.

Using HIPPOBAGS™ enabled Wates to set up waste segregation on each of the four sales floors making it easy for the site teams to separate the waste at source. The bags could then be easily manoeuvred to the ground floor where they were placed for collection with no need to double handle the waste into another container.



WHAT
THEY
SAY
ABOUT
US

The different sized HIPPOBAGS are ideal for the various waste streams generated on site and to date the flexibility and versatility afforded by this solution has enabled us to achieve 97% recycling in our first month on site. The friendly and efficient service from HIPPO complements and supports the effort inputted by the site team.

Site Manager for Wates Retail, Andy Cartwright



Putting Waste Management in Motion